



Southwark Sp
Lawn Bowls
Social Clu

Clubhouse

Trevor Bailey
Sports Ground



New 50 person
covered terrace

Car Park

Redundant
Tennis Court

Second
Pitch

Main Pitch

Extension to
existing stand and
installation of 100
seats

New hardstanding
around pitch
perimeter and
stands

New changing room facilities

New public toilets

New turnstiles

Dulwich Common Stand

DULWICH COMMON

Equipment
Store

Clubhouse

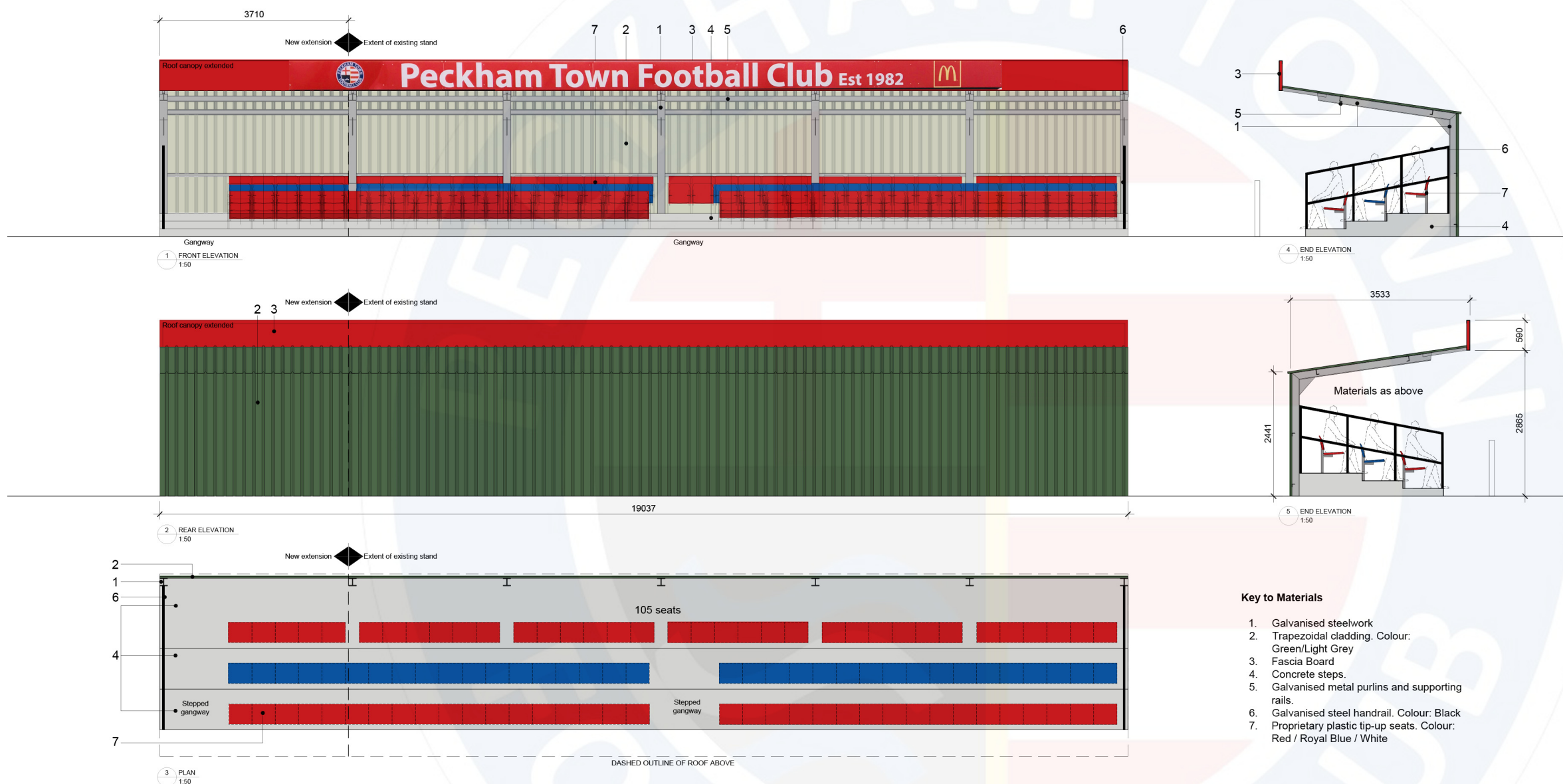
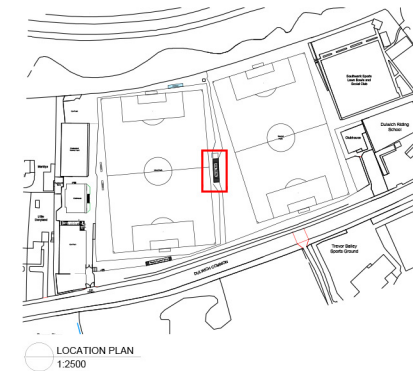
Marklye

Little
Donyland

Car Park

Main
Entrance

PROPOSED SITE PLAN SHOWING UPGRADES



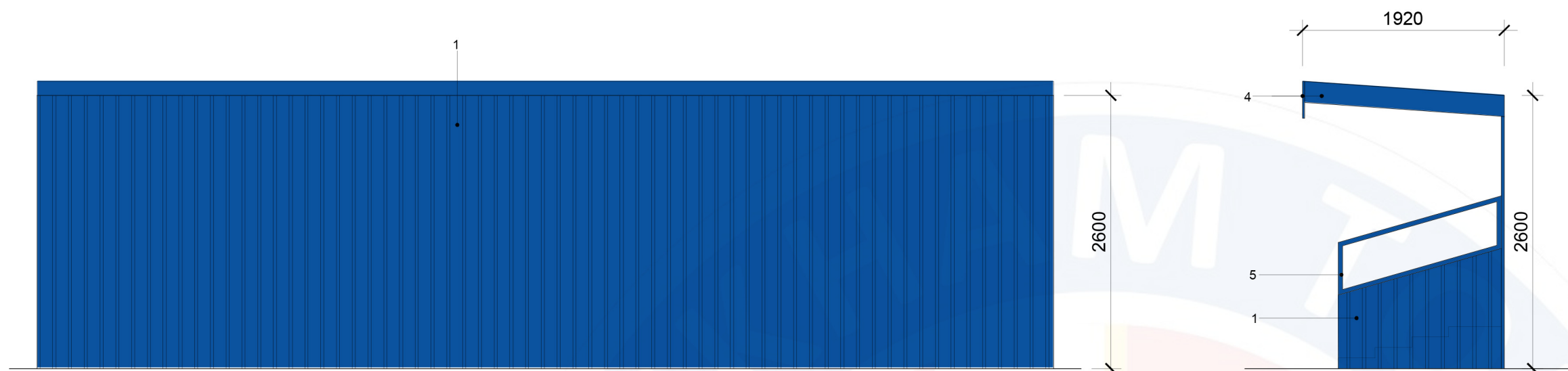
- Key to Materials**
- 1. Galvanised steelwork
 - 2. Trapezoidal cladding. Colour: Green/Light Grey
 - 3. Fascia Board
 - 4. Concrete steps.
 - 5. Galvanised metal purlins and supporting rails.
 - 6. Galvanised steel handrail. Colour: Black
 - 7. Proprietary plastic tip-up seats. Colour: Red / Royal Blue / White

Existing stand will be extended in same materials to facilitate the provision of the minimum number of seats required.

Existing bench seating will be removed and replaced with concrete steps and new tip-up seats will be installed.

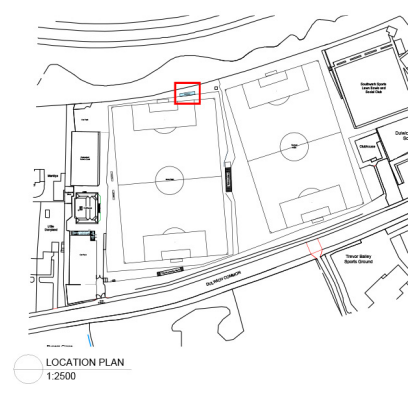
EXTENSION TO MAIN STAND WITH 100 SEATS INSTALLED



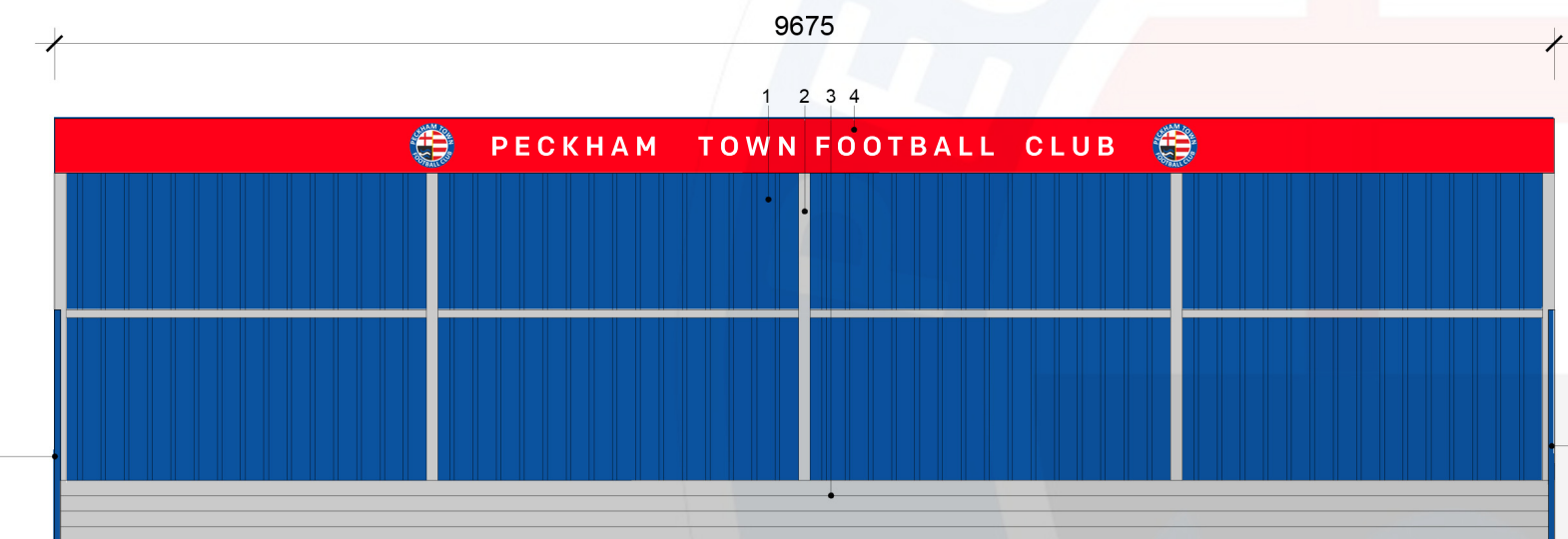


3 REAR ELEVATION
1:50

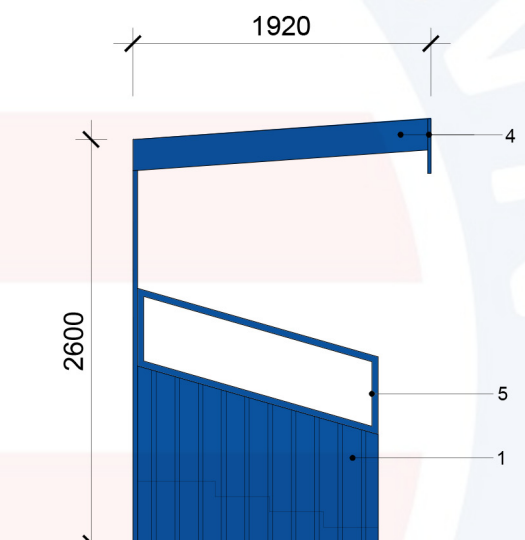
5 END ELEVATION
1:50



LOCATION PLAN
1:2500



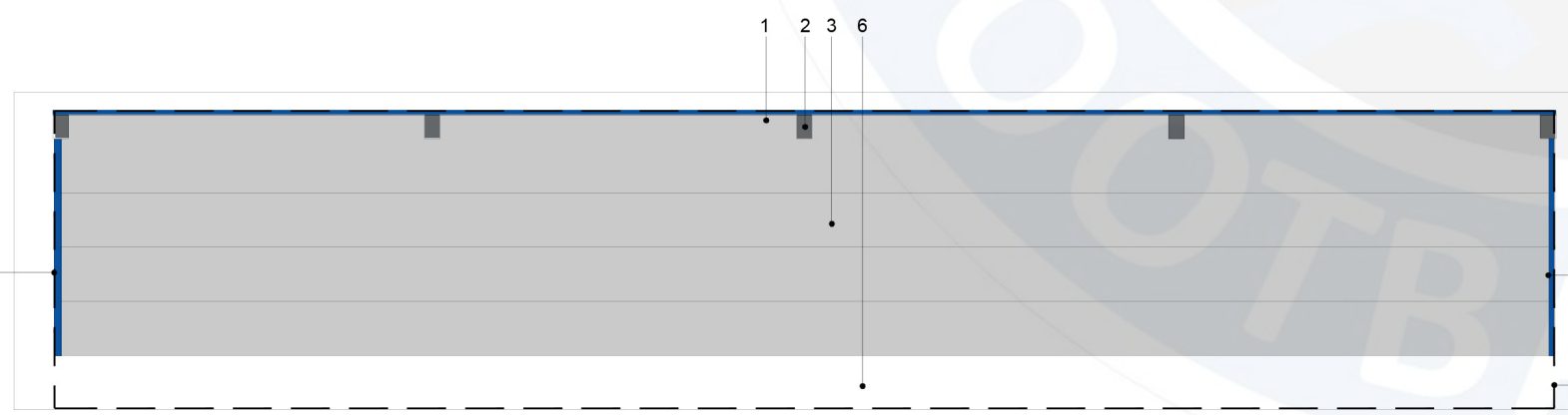
2 FRONT ELEVATION
1:50



4 END ELEVATION
1:50



Example of similar stand appearance



1 PLAN
1:50

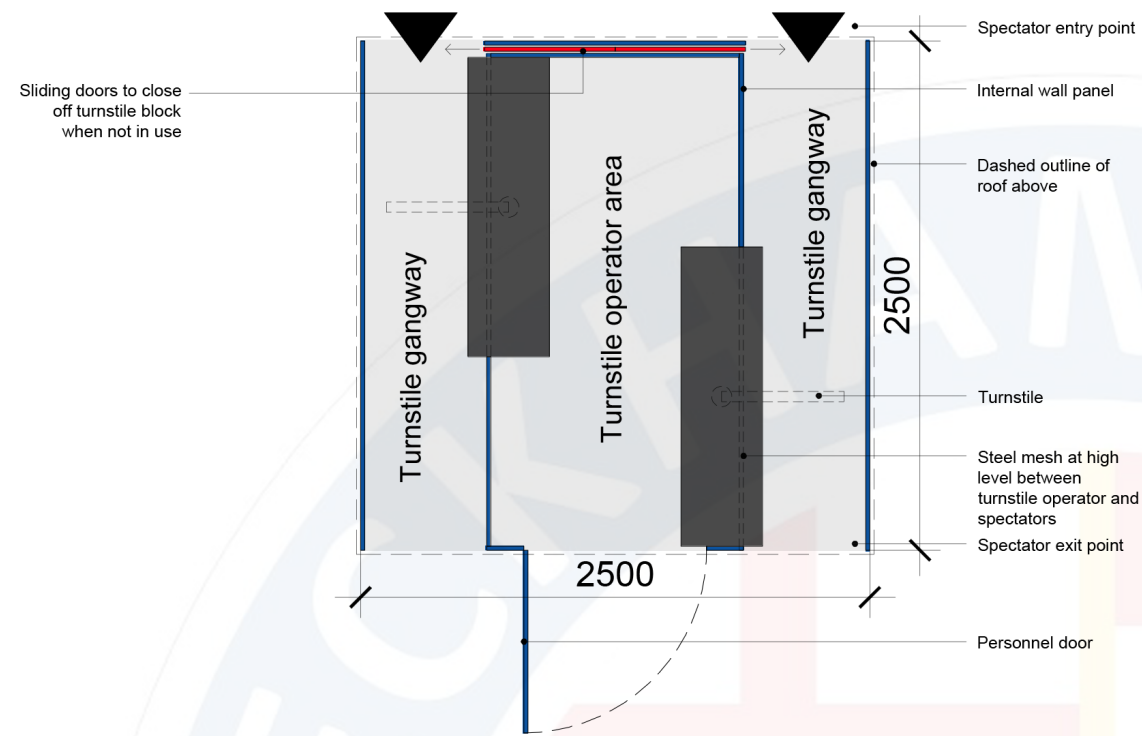
Key to Materials

- 1. Profile metal plastisol sheet in a corrosion resistant leather-grain finish. Colour: Royal Blue
- 2. Galvanised Steel frame
- 3. Galvanised Steel Durbar plate steps
- 4. Metal plastisol sheet fascia flashing. Colour: Royal Blue
- 5. Steel handrail. Colour: Royal Blue
- 6. Concrete base

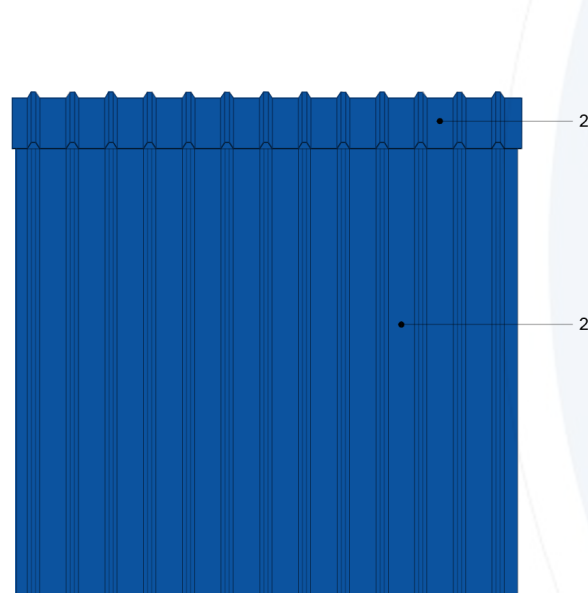
Dashed outline of roof above



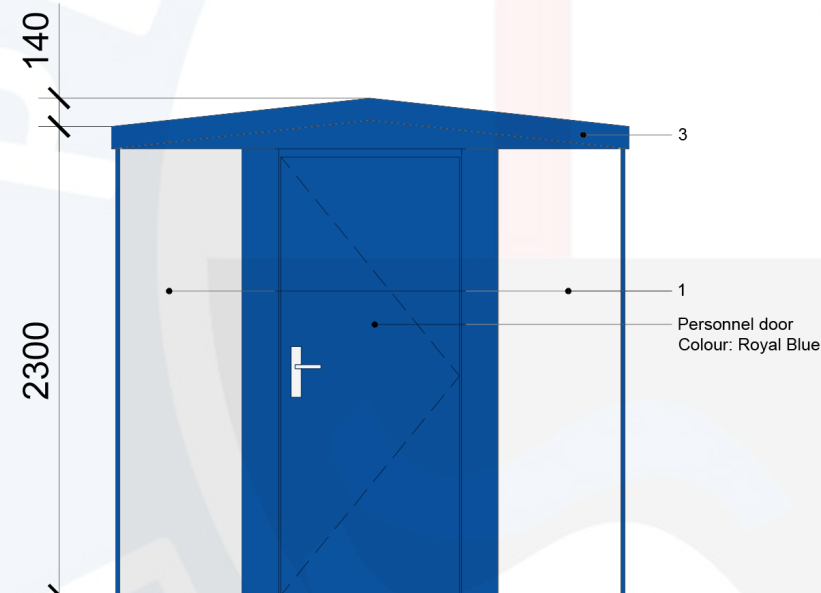
NEW 50 PERSON COVERED TERRACE



1 GROUND FLOOR PLAN
1:20



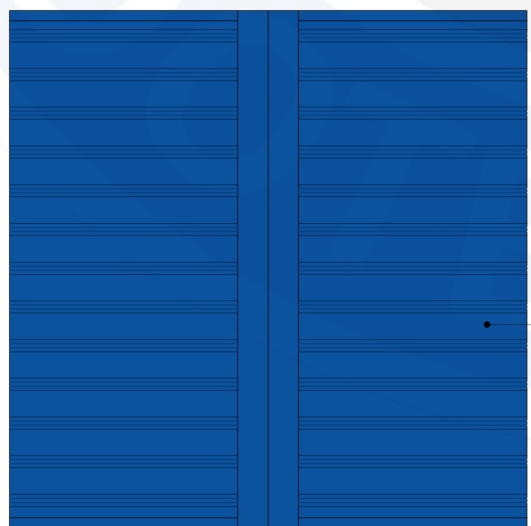
2 SIDE ELEVATION (opposite side same)
1:20



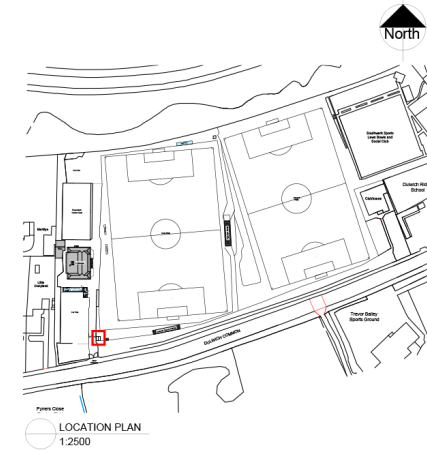
3 REAR ELEVATION (facing into site)
1:20



4 FRONT ELEVATION (as seen by approaching spectators)
1:20



5 ROOF PLAN
1:20



Key to Materials

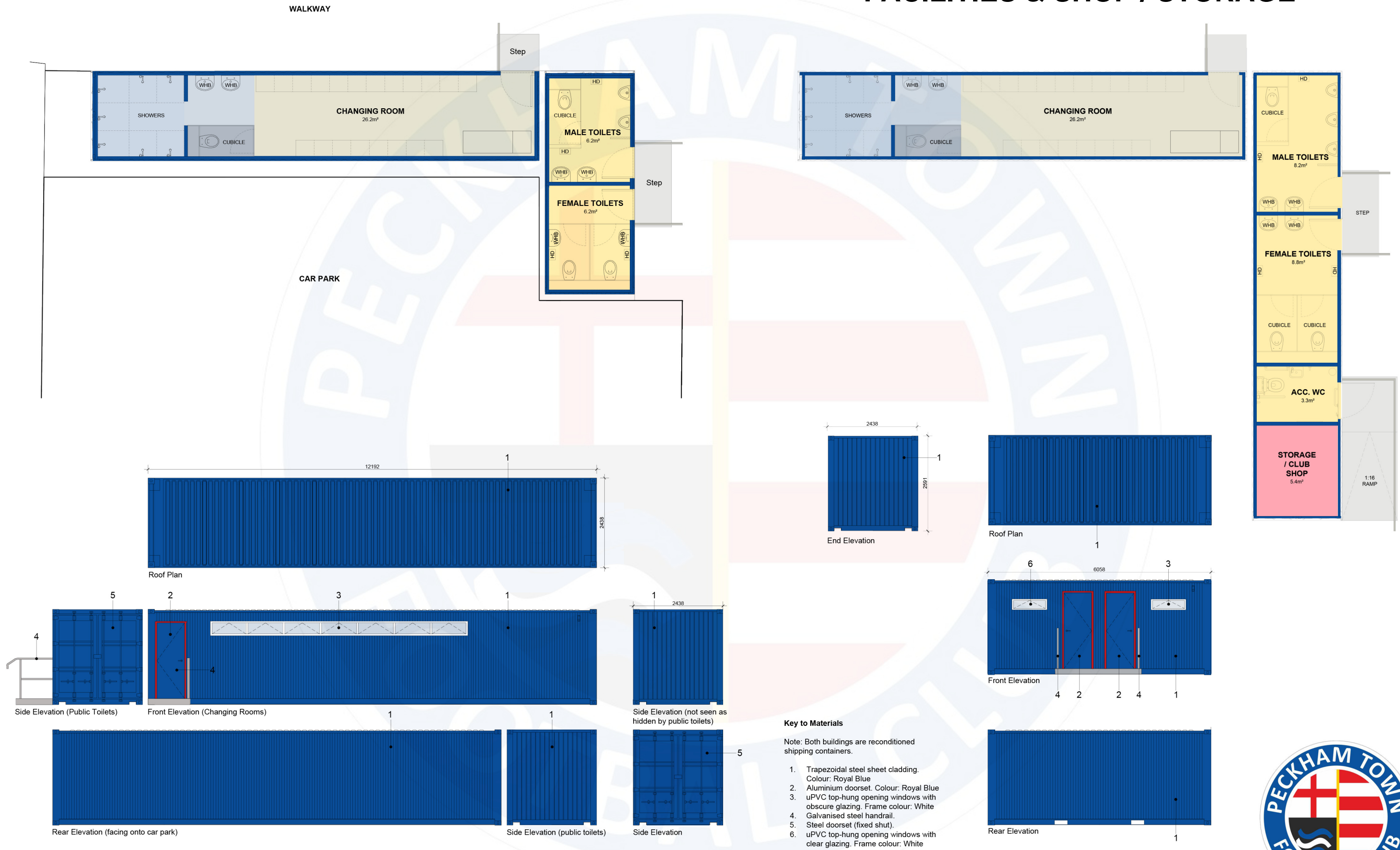
1. Flat steel sheet cladding. Colour: Royal Blue
2. Trapezoidal steel cladding. Colour: Royal Blue
3. Fascia flashing. Colour: Royal Blue

NEW TURNSTILE BLOCK



PROPOSED INTERNAL LAYOUTS

ALTERNATIVE OPTION WITH EXTENDED PUBLIC TOILET FACILITIES & SHOP / STORAGE



NEW AWAY TEAM CHANGING FACILITIES

NEW PUBLIC TOILETS

